

Review of BS 8110, EC2, and the Improved EC2 shear resistance models for stirrup in reinforced concrete beams

Aderinwale Ayodeji, Arum Chinwuba

Online Publication Date: 10 Feb 2023

URL: <http://www.jresm.org/archive/resm2023.497ma0810.html>

DOI: <http://dx.doi.org/10.17515/resm2023.497ma0810>

Journal Abbreviation: *Res. Eng. Struct. Mater.*

To cite this article

Ayodeji A, Chinwuba A. Review of BS 8110, EC2, and the Improved EC2 shear resistance models for stirrup in reinforced concrete beams. *Res. Eng. Struct. Mater.*, 2023; 9(2): 351-362.

Disclaimer

All the opinions and statements expressed in the papers are on the responsibility of author(s) and are not to be regarded as those of the journal of Research on Engineering Structures and Materials (RESM) organization or related parties. The publishers make no warranty, explicit or implied, or make any representation with respect to the contents of any article will be complete or accurate or up to date. The accuracy of any instructions, equations, or other information should be independently verified. The publisher and related parties shall not be liable for any loss, actions, claims, proceedings, demand or costs or damages whatsoever or howsoever caused arising directly or indirectly in connection with use of the information given in the journal or related means.



Published articles are freely available to users under the terms of Creative Commons Attribution - NonCommercial 4.0 International Public License, as currently displayed at [here](https://creativecommons.org/licenses/by-nc/4.0/) (the "CC BY - NC").



Research Article

Review of BS 8110, EC2, and the Improved EC2 shear resistance models for stirrup in reinforced concrete beams

Aderinwale Ayodeji*^{1,a}, Arum Chinwuba^{1,b}

Department of Civil Engineering, Federal University of Technology, Akure, Nigeria

Article Info

Abstract

Article history:

Received 10 Aug 2022

Revised 25 Dec 2022

Accepted 03 Feb 2023

Keywords:

Shear resistance;
Shear failure;
Experimental shear strength;
Reinforced concrete beams

The majority of beams used in construction have shear reinforcement provision. However, there exists a disparity in the results of the shear capacity guaranteed by the available shear design provisions. This is so because of the complex nature of the reinforced concrete shear mechanism. This study compares the BS 8110, EC2, and the Improved EC2 shear resistance models to ascertain the differences in their predictive ability when compared to experimental results. The EC2 is the most conservative at low level of shear reinforcement, i.e., shear reinforcement $\rho_w f_{yw} \leq 1.3 \text{ MPa}$, and at $\rho_w f_{yw} \leq 2 \text{ MPa}$ for mean value and design value predictions respectively. From the parametric trendline chart, the Improved EC2 predicts a higher shear capacity for lightly reinforced concrete beams than the EC2 shear model. A demerit point of 76 and 187 obtained respectively for the mean and design shear capacities of the BS 8110 shows that it is the most reliable of the three models in predicting the shear strength of stirrup-reinforced concrete beams.

© 2023 MIM Research Group. All rights reserved.

1. Introduction

Shear failure is an undesirable mode of failure in reinforced concrete and usually occurs with a devastating consequence [1-2]. It is therefore a structural requirement that whenever the value of design shear stress exceeds the permissible shear stress of concrete, shear reinforcement must be provided [3-4]. Owing to the complexities involved in shear transfer mechanisms and their contributing variableness, a general shear theory is evasive [5-9]. The available analytical models regarding shear strength provide results that are often different from experimental results [10-12]. Shear reinforcements, also called stirrups, are employed to modify the shear resistance of reinforced concrete beams, thus transiting from brittle to a more ductile mode of failure [13-15].

Shear reinforcement comes into play after the formation of cracks [4, 16] and has been identified to perform three primary functions, which are, to restrict the growth of diagonal cracks, improve shear resistance through aggregate interlock, and also to increase the dowel capacity of longitudinal reinforcement [17]. While accurate assessment of the shear capacity of reinforced concrete is critically important for public safety, the traditional techniques available for this task are open to dispute [18]. None of the rational models proposed to date completely satisfies the three fundamental requirements of force equilibrium, strain compatibility, and material laws simultaneously [19].

This paper compares the predictive capabilities of the Improved EC2, BS 8110-1, and the EC2 shear method at their respective mean and design values, and with the experimental observations through the use of trendlines, total demerit points, statistical and parametric analysis. Experimental observations are from a database of 160 test results compiled by [20] on slender beams with stirrup failure. The database consists of simply supported

*Corresponding author: ayodejiaderinwale@gmail.com

^a orcid.org/0000-0001-8704-8282; ^b orcid.org/0000-0001-7176-7602

DOI: <http://dx.doi.org/10.17515/resm2023.497ma0810>

Res. Eng. Struct. Mat. Vol. 9 Iss. 2 (2023) 351-362

rectangular and flanged beams subjected to point loads that failed by diagonal tension and shear compression, and with a shear span to depth ratio (a/d) greater than 2.4. Details of the range of parameters captured in the experimental observations are summarized in Table 1.

Table 1. Range of parameters from 160 experimental observations presented by Olalusi [20]

Parameters	Minimum Value	Maximum Value
b_w (mm)	75	457
d (mm)	161	1369
f_{cm} (MPa)	13.40	125.30
ρ_l (%)	0.14	5.20
$\rho_w f_{yw}$ (MPa)	0.28	9.80
a/d	2.40	7.10
V_{exp} (KN)	81	1330

2. Shear Capacity for Reinforced Concrete Beams

There are different design procedures for calculating the shear capacity of reinforced concrete beams with stirrups [21-22]. Some prescribed shear capacity as the sum of both concrete and stirrup contributions, while others are based solely on stirrup contributions. Several models have been developed for shear in RC members as a result of its intricate nature [7, 23]. Pertinent models upon which current design standards are based are the 45-degree Truss Model [24], the Variable Angle Truss Model (VSIM) [25], and the Modified Compression Field Theory (MCFT) [26, 27]. Although BS 8110-1 has been retracted in the UK and replaced by EC2, it is still used in Nigeria as a guide for the design of reinforced concrete [28].

The EC2, which is based on the variable strut inclination method, has been identified to suffer drawbacks when predicting the shear capacity of lightly reinforced concrete beams due to neglect of the concrete contribution which otherwise is considered significant at low a level of shear reinforcement [29-33]. This has prompted Domenico and Ricciardi [34] to develop a shear strength model considered as an upgrade to the EC2 truss model with two inclinations of the compression strut, i.e., the lower inclination θ_1 and upper inclination θ_2 to ameliorate the limitations identified in the EC2 model.

2. 1. BS 8110 Shear Design Provision

The BS 8110 adopts an empirical model for its concrete contribution while the steel contribution is based on the 45° truss model. The concrete contribution v_c and that of the stirrups v_s adds up as being the nominal shear stress v_n [MPa] of the reinforced concrete beam as obtainable from Eqs. (1)-(2):

$$v_n = v_c + v_s \text{ [MPa]} \tag{1}$$

$$v_n = \frac{0.75}{\gamma_c} \left(\frac{f_{cu}}{25}\right)^{1/3} \left(\frac{100A_s}{b_w d}\right)^{1/3} \left(\frac{400}{d}\right)^{1/4} b_w d + \frac{A_{sw} f_{yk} d}{\gamma_{ms} s} \text{ [MPa]} \tag{2}$$

where γ_c is the partial material safety factor for concrete ($\gamma_c = 1.25$); γ_s is the partial material safety factor for steel ($\gamma_s = 1.05$); $100A_s/b_w d$ is the reinforcement ratio; f_{yk} is the yield strength of shear reinforcement; A_{sw} is the area of shear reinforcement; stirrup spacing $s \leq 0.75$; f_{cu} is the characteristic concrete cube strength expressed as $f_{cu} = 0.8f_c$, where f_c is the cylindrical concrete strength.

2.2 EN 1992 Eurocode 2: 2004 Shear Design Provision

Unlike the BS 8110, the EC2 computes its shear capacity by adopting variable strut inclination θ while neglecting the concrete contribution. The Variable Strut Inclination Method (VSIM) upon which the EC2 is based allows the concrete compressive angle θ to be varied between 21.8 and 45 degrees in a truss model according to derivations from plasticity theory [35 -37] The ultimate shear capacity of the shear reinforcement $V_{Rd,s}$, the web-crushing shear capacity $V_{Rd,max}$, and the strut angle θ can be determined by Eqs. (3)-(5):

$$V_{Rd,s} = \frac{A_{sw}}{s} z \frac{f_{yw k}}{\gamma_s 1.15} \cot \theta \quad [\text{KN}] \quad (3)$$

$$V_{Rd,max} = \frac{\left(\frac{f_{ck}}{\gamma_c}\right) b_w z v_1 \alpha_{cw}}{(\cot \theta + \tan \theta)} \quad [\text{KN}] \quad (4)$$

$$\theta = \sin^{-1} \sqrt{\frac{A_{sw} \left(\frac{f_{yw k}}{\gamma_s}\right)}{\alpha_{cw} b_w s v_1 \left(\frac{f_{ck}}{\gamma_c}\right)}} \quad [\text{degrees}^\circ] \quad (5)$$

where, A_{sw} is the cross-sectional area of the shear reinforcement, s is the stirrup spacing; f_{ck} and $f_{yw k}$ are the characteristic values of the concrete compressive strength respectively; internal lever arm is taken as $z = 0.9d$; v_1 may be taken to be $0.6 \left(1 - \frac{f_{ck}}{250}\right)$; γ_c and γ_s are the partial material safety factor for concrete and steel; EC2 recommends the value of $\gamma_c = 1.5$ and $\gamma_s = 1.15$. The minimum shear reinforcement is as given in Eq. (6):

$$\rho_{w,min} = 0.08 \frac{\sqrt{f_{ck}}}{f_{yw k}} \quad [\text{MPa}] \quad (6)$$

2.3 Improved Eurocode 2 Truss Model with Variable Inclination Struts

Domenico and Ricciardi [34] present a shear strength model which can be considered as an upgrade to the EC2 shear stress model. Though the underlying theoretical framework for the two models is similar, the Improved EC2 adopts two (rather than one) representative strut inclinations called θ_1 (lower inclination) and θ_2 (upper inclination), to capture the differences in the shear state along the web height of the beam as show in Fig. 1.

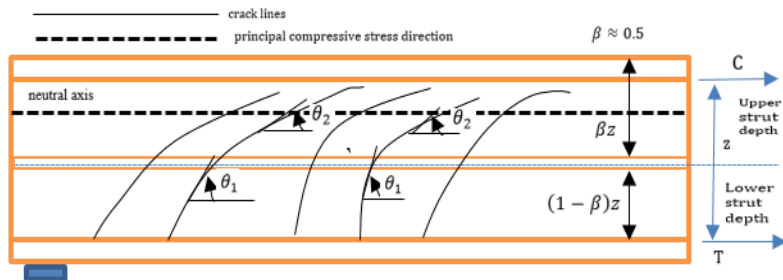


Fig 1. A rectangular beam showing the inclination angles θ_1 and θ_2 and transition depth z

By adopting a transition depth, $\beta = 1/2$, the closed-form expressions presented in Table 2 are easily adaptable for shear strength calculations for practical design and verification purposes and with less computational effort. For the Improved EC2 analysis, the efficiency factor $v_1 = 0.6(1 - f_{cm}/250)$, the mechanical ratio of the transverse reinforcement $w_w = \rho_w(f_{ywd}/f_{ywd})$, and the normalization parameters, $r = b_w z v_1 f_{cd}$ [in (N) units] are first computed. The calculated value of w_w is then checked against the limitations specified in Table 2. v_{Rd} is thus calculated based on the design region identified with the value of w_w . The shear strength of the beam, V_{Rd} [in (KN) units], is therefore obtained by multiplying the dimensionless strength of v_{Rd} computed with the normalization parameter r , $V_{Rd} = v_{Rd} r$

Table 2. Improved EC2 design regions and compression struts inclination by Domenico and Ricciardi [34]

Design region	ω_ω limitations	$cot\theta_1$	$cot\theta_2$	v_{Rd}
1	$0 \leq \omega_\omega \leq \omega_{\omega 1}$	$(cot\theta_1)_{max} = 2.5$	$(cot\theta_2)_{max} = 5$	$3.75\omega_\omega$
2	$\omega_{\omega 1} \leq \omega_\omega \leq \omega_{\omega 2}$	$\frac{5 + \sqrt{25 + 104\omega_\omega - 270}}{52\omega_\omega}$	$(cot\theta_2)_{max} = 5$	$\frac{5 + 260\omega_\omega + \sqrt{25 + 104\omega_\omega - 270\omega_\omega^2}}{104}$
3	$\omega_{\omega 2} \leq \omega_\omega \leq \omega_{\omega 3}$	$\frac{cot\theta_1^{opt}}{2\sqrt{2\omega_\omega}} = \frac{\eta(\omega_\omega)}{2\sqrt{2\omega_\omega}}$	$\frac{cot\theta_2^{opt}}{2\sqrt{2\omega_\omega}} = \frac{4\omega_\omega\sqrt{1 + 8\omega_\omega} + \sqrt{2\eta(\omega_\omega)}}{2\sqrt{2\omega_\omega}}$	$\frac{v_{Rd}^{opt}}{8(1 + 4\omega_\omega - k(\omega_\omega))} = \frac{\sqrt{2\eta(\omega_\omega)(1 + 8\omega_\omega - k(\omega_\omega)) + 16\omega_\omega^2\sqrt{1 + 8\omega_\omega}}}{8(1 + 4\omega_\omega - k(\omega_\omega))}$
4	$\omega_{\omega 3} \leq \omega_\omega \leq \omega_{\omega,max}$	$cot\hat{\theta}^{EC2} = \sqrt{\frac{1 - \omega_\omega}{\omega_\omega}}$	$cot\hat{\theta}^{EC2} = \sqrt{\frac{1 - \omega_\omega}{\omega_\omega}}$	$v_{Rd}^{EC2} = \sqrt{\omega_\omega(1 - \omega_\omega)}$
5	$\omega_{\omega,max} \leq \omega_\omega$	$cot\hat{\theta}^{EC2} = 1$	$cot\hat{\theta}^{EC2} = 1$	v_{Rd}^{EC2}

where: $\omega_{\omega 1} = 0.0716$; $\omega_{\omega 2} = 0.1136$; $\omega_{\omega 3} = 0.25$; $\omega_{\omega,max} = 0.5$;

$$k(\omega_\omega) = \sqrt{1 + 8\omega_\omega - 16\omega_\omega^2 - 128\omega_\omega^3}; \eta(\omega_\omega) = \sqrt{1 + 4\omega_\omega - 8\omega_\omega^2 - k(\omega_\omega)}$$

2.3 Design and Mean Shear Capacity

Design values are obtained by incorporating the characteristics material strength (f_{ck} and f_{ywk}) and the partial safety factor of concrete (γ_c) and steel (γ_s) into the expressions of the shear resistance model equations thus introducing a conservative bias into the design model [30]. The best estimate model/mean value predictions are obtained by neglecting all safety bias when calculating the shear resistance. For the mean value prediction, the characteristics material strengths f_{ck} and f_{ywk} are expressed at their mean values f_{cm} and f_{ywm} and partial safety factors γ_c and γ_s are equated to unity. The mean concrete strength as recommended by EN 1992-1-1 and the steel yield strength as recommended by Holicky [38] are given by Eqs. (7)-(8):

$$f_{cm} = f_{ck} + 8 \quad [\text{MPa}] \tag{7}$$

$$f_{ywm} = f_{ywk} + 2\sigma_{fyw} \quad [\text{MPa}] \tag{8}$$

where, $\sigma_{fyw} = 0.1f_{ywm}$ and $2\sigma_{fyw}$ is the standard deviation of steel yield strength stipulated by practice standard in Europe.

3. Results and Discussions

3.1 Comparison of the Trendline of Normalized Experimental Observations to Design Value Predictions of the Improved EC2 Model and the Codified EC2 and BS 8110 Standards

The trend line of the normalized experimental shear stress observations was compared to that of the EC2, BS 8110, and the Improved EC2 design shear stress capacity predictions (V/bd) as shown in Figure 2 at varied amount of shear reinforcement ($\rho_w f_{yw}$). Judging from the plot, the BS 8110 trendline depicts a consistent relative increase of shear stress over the parametric range of shear reinforcement ($\rho_w f_{yw}$) under consideration; while the trend line pattern of both the Improved EC2 and EC2 does not depict similar consistent level of appreciable increase over the entire parametric range of ($\rho_w f_{yw}$) increases. At a range of $\rho_w f_{yw} \leq 2$, EC2 has the most conservative trendline of all the models considered. At $\rho_w f_{yw} > 0.3$, the Improved EC2 has the least conservative trendline which shows an approximate closeness to the experimental observations. Based on the premise that the Improved EC2 is based on the same theoretical principles as EC2 capacity predictions, the trendlines for these models possess similar curvilinear pattern.

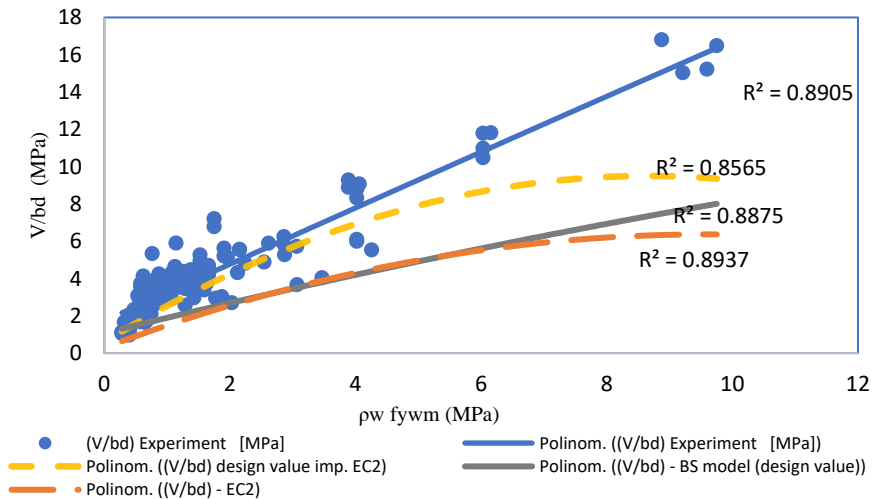


Fig. 2 Experimental and Predicted Design Value Shear Strength by Improved EC2, EC2 and BS 8110

3.2 Comparison of the trendline of normalized experimental observations to the mean value predictions of the Improved EC2 model and the codified EC2 and BS 8110 standards

The trend line of the normalized experimental shear stress observations was compared to that of the EC2, BS 8110 and the Improved EC2 mean value prediction (V/bd) as shown in Figure 3. The mean shear capacity predictions of EC2 below shear reinforcement range of 1.2 Mpa i.e $\rho_w f_{yw} \leq 1.2 \text{ Mpa}$, is the most conservative. Above this, its trendline maintains a curvilinear pattern which though conservative, approximates the trendline of the experimental observations at $\rho_w f_{yw} \leq 6 \text{ Mpa}$. The trendline of the improved EC2 mean predictions becomes unconservative at a parametric range of $1.1 \geq \rho_w f_{yw} \leq 5.5 \text{ Mpa}$. The Improved EC2 thus over-predicts the shear capacity at the stated parametric range. The BS 8110 code mean predictions maintain a conservative trendline over the entire range of $\rho_w f_{yw}$ observed.

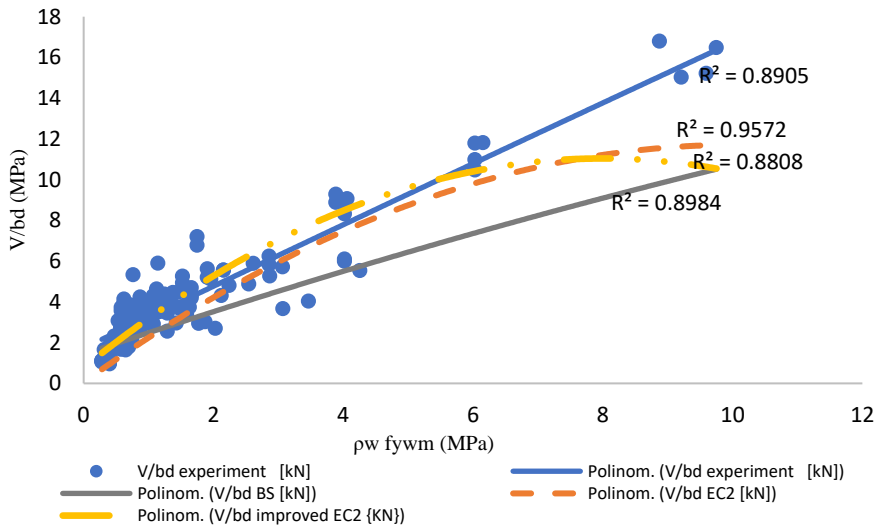


Fig. 3 Experimental and Predicted Design Value Shear Strength by Improved EC2, EC2 and BS 8110

3.3 Comparison of the Design value shear strength predictions and the mean value shear strength predictions

The design value shear strength predictions as captured in Figure 2 depicts a general conservative trendlines with the Improved EC2 as its least conservative model prediction at a range of $\rho_w f_{yw} \geq 0.3 \text{ Mpa}$. The mean value predictions in Figure 3 depict a less conservative trendline for all the models considered with the Improved EC2 being unconservative at a parametric range of $1.1 \geq \rho_w f_{yw} \leq 5.5 \text{ Mpa}$ when compared to the experimental trendline.

3.4 Total Demerit Point Analysis

Demerit point analysis introduced by Collins [39] for the performance assessment of shear strength methods assigns demerit points, within a specified range, to the ratio of experimental observations and predicted shear strength method under consideration V_{exp}/V_{pred} as given in Table 3.

Table 3. Demerit Points Classification [39]

S/N	Classification	$\left(\frac{V_{exp}}{V_{pred}}\right)$ Range	DP
1	Extremely dangerous	<0.5	10
2	Dangerous	0.50-0.65	5
3	Low safety	0.65-0.85	2
4	Appropriate safety	0.85-1.30	0
5	Conservative	1.3-2.00	1
6	Extremely conservative	>2.0	2

The corresponding values are then summed as the Total Demerit Point (TDP). The TDP shows the overall performance of each shear strength method as shown in Fig 4. A smaller value of the TDP indicates the shear strength evaluation method to be more reliable in

predicting the shear strength of reinforced concrete beams under this condition. More so, Improved EC2 maintains a low variability between its design and mean shear strength. From Table 4, it can be observed that EC2 largely underpredicts shear capacity with the highest distribution of experimental to estimated shear capacity (V_{exp}/V_{pred}) in the extremely conservative class both for its mean and design value predictions which is due to the conservation provided by the strut angle(θ).

Table 4. Demerit Points Classification [39]

Range	Classification	DP	BS 8110		EC2		Improved EC2	
			Mean Value Points	Design Value Points	Mean Value Points	Design Value Points	Mean Value Points	Design Value Points
<0.5	Extremely dangerous	10	0	0	0	0	10	0
0.5-0.65	Dangerous	5	0	0	5	0	35	5
0.65-0.85	low safety	2	4	0	10	0	52	20
0.85-1.30	Appropriate safety	0	0	0	0	0	0	0
1.30-2.00	Conservative	1	66	99	78	40	35	76
>2.0	Extremely conservative	2	6	88	64	228	2	24
Total Demerit Points (TDP)			76	187	157	268	134	125

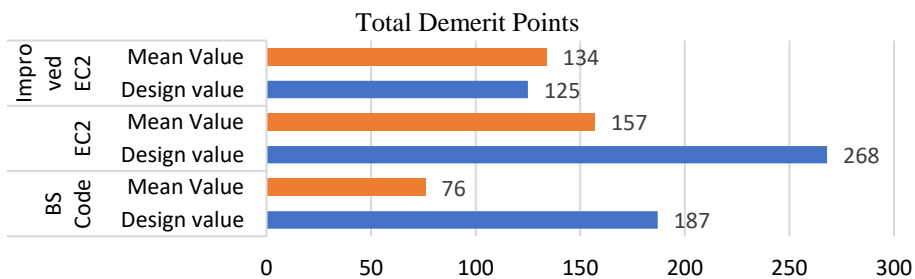


Fig. 4 Demerit point analysis

3.5 Statistical Properties

From Table 5, the sample mean of the improved EC2 has the lowest value at 1.10 and 1.30 respectively for both mean and design value predictions, followed by the BS 8110 at 1.34 and 1.77, then the EC2 at 1.58 and 2.34. The Improved EC2 thus performs best as the least conservative design method and with the lowest variability at 0.30 and 0.37 standard deviation for its best estimate and design value predictions respectively.

Table 5. Statistical Properties of BS 8110, EC2 and Imp. EC2

		Mean (μ)	Standard Deviation (σ)
BS 8110	Mean Value	1.3	0.32
	Design Value	1.77	0.43
EC2	Mean Value	1.5	0.47
	Design Value	2.34	0.65
Imp. EC2	Mean Value	1.10	0.30
	Design Value	1.36	0.37

3.5 Parametric Variation

In a bid to further examine the influence of shear reinforcement, beam size and concrete strength as it concerns the models under consideration, parametric analysis was

conducted across practical ranges of the aforementioned parameters. A lot of the mean, and the design shear value of a given test section will be varied across the percentage shear reinforcement $\rho_w f_{yw m}$ as depicted in Figs. (5) to (8).

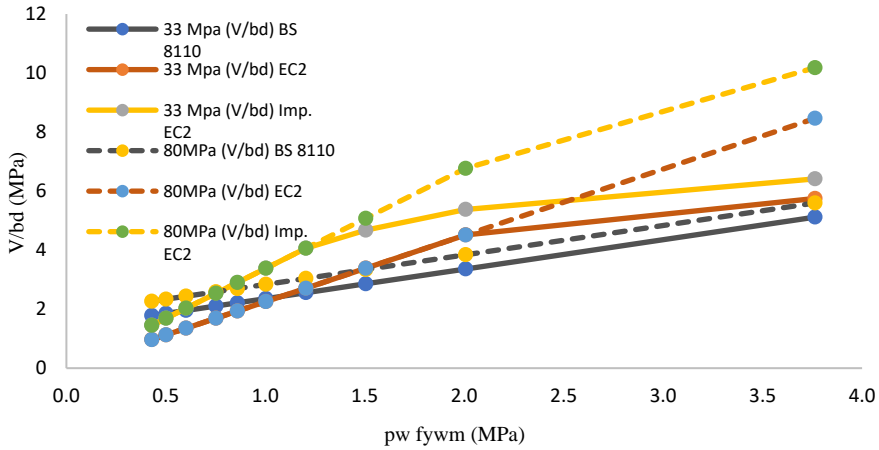


Fig. 5 Mean value parametric variation:300x450mm at $f_{cm} = 33$ and 80MPa

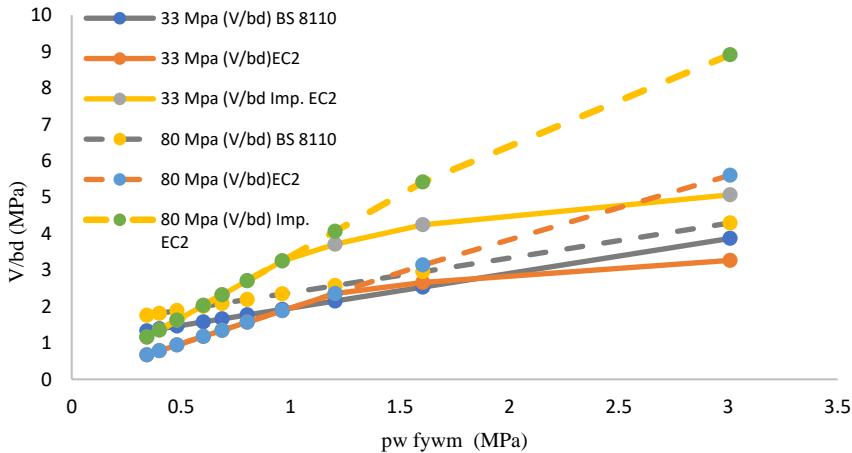


Fig. 6 Design value parametric variation:300x450mm at $f_{cm} = 33$ and 80MPa

The test beam for the parametric analysis in Figure 4 and 5 had the following section properties: $b_w = 300mm$, $d = 450mm$, $f_{yw m} = 460MPa$, $a/d = 2.5$, $\rho_l = 3.5\%$, $f_{cm} = 33$ and 80MPa respectively. The test beam for Figure 6 and 7 had the following properties: $b_w = 600mm$, $d = 900mm$, $f_{yw m} = 460MPa$, $a/d = 2.5$, $\rho_l = 3.5\%$, $f_{cm} = 33$ and 80MPa respectively. Observations from the mean value plot in Figure 4 shows that the trendlines of the EC2 and the Improved EC2 model were not affected by the concrete strength (33 and 80MPa) at $\rho_w f_{yw m} \leq 2MPa$ and $\rho_w f_{yw m} \leq 1.2MPa$ respectively above which noticeable variation is observed as the amount of shear reinforcement increases. For the design plot in Figure 5, the EC2 and the Improved EC2 remained unaffected by the varied concrete

strength at a low shear reinforcement $\rho_w f_{yw} \leq 1.2 \text{MPa}$ and $\rho_w f_{yw} \leq 0.9 \text{MPa}$ respectively. The BS 8110 maintains an appreciable increase over the entire range of shear reinforcement both for the mean and design value plots at f_{cm} of 33 and 80 MPa without sudden slope change.

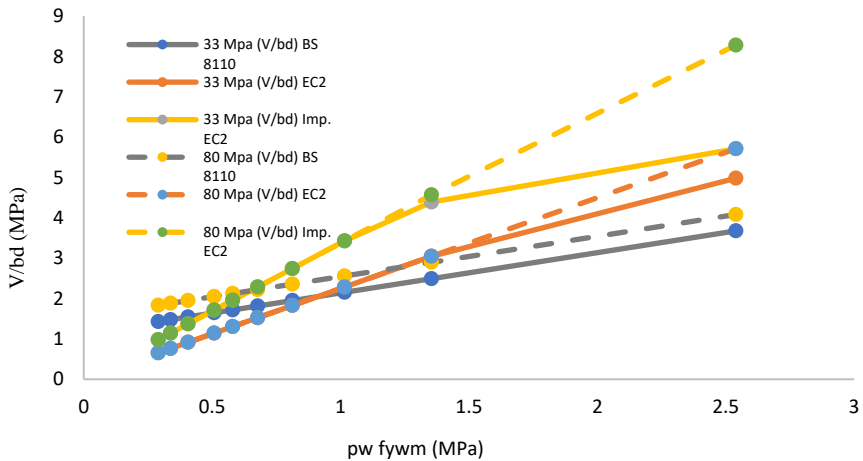


Fig. 7 Mean value parametric variation: 600x900mm at $f_{cm} = 33$ and 80MPa

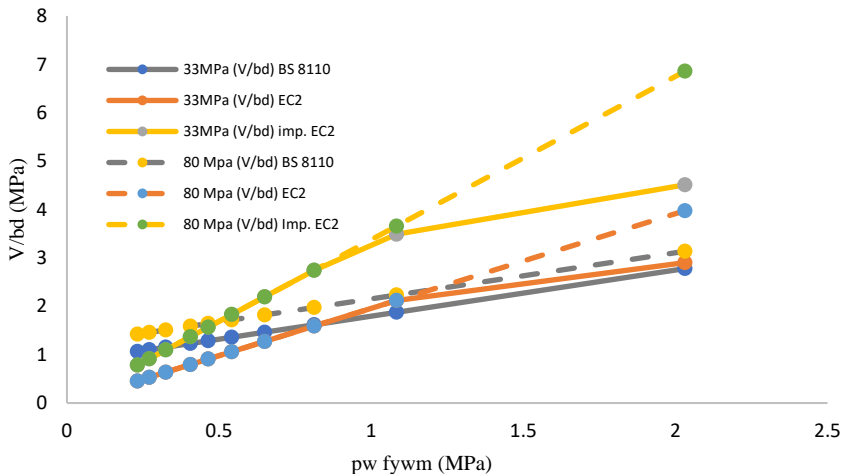


Fig. 8 Design value parametric variation: 600x900mm at $f_{cm}=33$ and 80MPa

Observations from the mean value plot in Figure 6 shows that at $\rho_w f_{yw} \leq 0.3 \text{MPa}$ and $\rho_w f_{yw} \leq 1 \text{MPa}$ the trendlines is unaffected by the variations in concrete strength at 33 and 80 MPa respectively. For the design plot in Figure 7, the trendlines for the EC2 at $\rho_w f_{yw} \leq 1.1 \text{MPa}$ and the Improved EC2 at $\rho_w f_{yw} \leq 0.8 \text{MPa}$ remained unaffected by the changes in the concrete shear strength (33 and 80 MPa), and above these shear reinforcement values, concrete strength had a tolerable influence on their respective trendlines as the amount of shear reinforcement increases.

5. Conclusions

This study compares the Improved Eurocode 2 truss model having two variable inclination compression struts with Eurocode 2 and BS 8110 shear capacity prediction methods for reinforced concrete beams with stirrups. From the trendline analysis conducted in this study, the design value trendline for Improved EC2 is the least conservative which best approximates the experimental observation. The mean value prediction for the Improved EC2 between the ranges of $1.1 \geq \rho_w f_{yw m} \leq 5.5 \text{ MPa}$ is largely unconservative with shear capacity predictions exceeding experimental observations.

From the Total demerit point analysis, the Improved EC2 has the least variability between its mean and design value at 134 and 125 respectively. Though the BS 8110 gave the least mean value demerit point of 76, its design value demerit point of 187 is higher than that obtained for the Improved EC2 at 125. From the statistical analysis, the Improved EC2 had the lowest sample mean both for its design and mean value predictions when compared to the EC2 and BS 8110 shear strength methods. Also, it has the least variability of 0.30 and 0.37 standard deviation for its mean and design value predictions respectively.

From the parametric analysis, the trendlines of BS 8110 maintain an appreciable increase over the entire range of shear reinforcement both for the mean and design value plots of the two test beams under consideration without a sudden slope change. The trendline of the EC2 and the Improved EC2 follow almost the same pattern. This further confirms the underlying assumption that the two models were based on the same theoretical framework. The Improved EC2 predicts higher shear stresses than the EC2 model over the parametric range of the shear reinforcement considered on the plots. The Improved EC2 might lead to considerable savings in the amount of shear reinforcement consumed in construction works, especially for lightly reinforced concrete where the EC2 shows weakness.

References

- [1] Arabzadeh A, Hizaji RA. Simple approach to predict the shear capacity and failure mode of fixed-end RC deep beams based on experimental study. *International Journal of Engineering (IJE)*, IJE Transactions A: Basics, 2019; 32(4): 474-483 <https://doi.org/10.5829/ije.2019.32.04a.03>
- [2] Zhang M, Deng M, Yang J, Zhang Y. Experimental study on the shear behaviour of reinforced highly ductile fiber-reinforced concrete beams with stirrups. *Buildings*, 2022; 12(8): 1264. <https://doi.org/10.3390/buildings12081264>
- [3] Zamri NF, Mohammed RN, Khalid N, Chiat KY. The Effects of Inclined Shear Reinforcement in Reinforced Concrete Beam. *Malaysian Journal of Civil Engineering*, 2018; 30(1): 85-96. <https://doi.org/10.11113/mjce.v30.169>
- [4] Rahal KN, Al-Shaleh K. Minimum transverse reinforcement in 65 MPa concrete beams. *ACI Structural Journal*, 2004; 101(6): 872-878. <https://doi.org/10.14359/13463>
- [5] Talib HY, and Al-Salim NH. Improving punching shear in flat slab by replacing punching shear reinforcement by ultrahigh performance concrete. *International Journal of Engineering, Transaction B: Applications*, 2022; 35(8): 1619-1628, <https://doi.org/10.5829/IJE.2022.35.08B.18>
- [6] Victor S, Bentz E, Ruiz M, Foster S, Muttoni A. Background to the fib Model Code 2010 shear provisions-part 1; beams and slabs. *Journal of Structural concrete*, 2013; 14(3): 195-203. <https://doi.org/10.1002/suco.201200066>
- [7] Hawkins N, Kuchma D, Mast F, Marsh L. and Reineck, K. H. *Simplified Shear Design of Structural Concrete Members: Appendixes*. Transportation Research Board of the National Academies, University of Illinois, Urbana, Illinois, 2004.

- [8] Słowik M. Shear Failure Mechanism in Concrete Beams. *Procedia Materials Science*, 2014; (3): 1977-1982. <https://doi.org/10.1016/j.mspro.2014.06.318>
- [9] Zhang T, Visintin P, Oehlers DJ. Shear strength of RC beams with steel stirrups. *Journal of Structural Engineering*, 2015; 14(2): 04015135. [https://doi.org/10.1061/\(ASCE\)ST.1943-541X.0001404](https://doi.org/10.1061/(ASCE)ST.1943-541X.0001404)
- [10] Ghafar A, Javed A, Rehman H, Ahmed K. Ilyas M. Development of shear capacity equations for rectangular reinforced concrete beams. *Pakistan Journal of Engineering and Applied Sciences*. 2010; 6: 1-8.
- [11] Wei W, Che Y, Gong J. Shear strength model for reinforced concrete beams web reinforcement. *Magazine of Concrete Research*, 2011; 63(6): 423-431. <https://doi.org/10.1680/macrcr.10.00020>
- [12] El-Chabib, H, Nehdi, M, Saïd A. Predicting the effect of stirrups on shear strength of reinforced normal-strength concrete (NSC) and high-strength concrete (HSC) slender beams using artificial intelligence. *Canadian Journal of Civil Engineering*. 2006; 33: 933-944. <https://doi.org/10.1139/06-033>
- [13] Collins M, Bentz E, Sherwood E. Where is shear reinforcement required? Review of research results and design procedures. *ACI Structural Journal*. 2008; 10(5): 590-600.
- [14] Park MK, Lee DH, Ju, H, Hwang JH, Choi SH, Kim KS. Minimum shear reinforcement ratio of prestressed concrete members for safe design. *Journal of Structural Engineering and Mechanics*, 2015; 56(2): 317-340 <https://doi.org/10.12989/sem.2015.56.2.317>
- [15] De Domenico D, Ricciardi G. A stress field approach for the shear capacity of RC beams with stirrups. *Journal of Structural Engineering and Mechanics*, 2020; 73(5): 515-527
- [16] Yoon Y, Cook W, Mitchell D. Minimum Shear Reinforcement in Normal, Medium, and High-Strength Beams. *ACI Structural Journal*. 1996; 93(5): 576-584. <https://doi.org/10.14359/9716>
- [17] Wang H. Reinforced concrete beam design for shear. University of Calgary, Alberta, Canada, 2002.
- [18] Collins MP, Mitchell D. Shear design and evaluation of concrete structures. *Concrete in Australia*, 2014; 40(1): 28-38.
- [19] Yang, KH, Ashour AF. Load capacity of reinforced concrete continuous deep beams. *Journal of Structural Engineering*, 2008; 134(6): 919-929. [https://doi.org/10.1061/\(ASCE\)0733-9445\(2008\)134:6\(919\)](https://doi.org/10.1061/(ASCE)0733-9445(2008)134:6(919))
- [20] Olalusi OB. Reliability Assessment of shear design provisions for reinforced concrete beams with stirrups, PhD Thesis, Dept. of Civil Engineering University of Stellenbosch, South Africa, 2018.
- [21] Sagaseta J, Vollum R. Influence of beam cross-section, loading arrangement and aggregate type on shear strength. *Magazine of Concrete Research*, 2011; 63(2): 139-155. <https://doi.org/10.1680/macrcr.9.00192>
- [22] Collins M, Bentz E, Sherwood E, Xie L. An Adequate theory for the shear strength of reinforced concrete structures. *Magazine of Concrete Research*, 2008; 60: 635-650, <https://doi.org/10.1680/macrcr.2008.60.9.635>
- [23] American Concrete Institute - American Society of Civil Engineers (ACI ASCE) Committee 445. Report on Shear and Torsion. Recent Approaches to Shear Design of Structural Concrete. *ACI Structural Journal*, 1998; 124: 1375-1416. [https://doi.org/10.1061/\(ASCE\)0733-9445\(1998\)124:12\(1375\)](https://doi.org/10.1061/(ASCE)0733-9445(1998)124:12(1375))
- [24] BS 8110-1, Structural use of Concrete-Part 1: code of practice for design and construction. British Standards Institution, UK, 1997.
- [25] EN-1992-1-1: Eurocode 2 - Design of concrete structures - Part-1-1: General rules and rules for buildings. European committee for standardization, Brussels, 1991.
- [26] ACI for structural Design ACI Committee 318. Building code requirements for structural concrete (ACI 318-11M) and Commentary. American Concrete Institute, 2011.

- [27] CSA Standard A23.3-04. Design of concrete structures for buildings, Canadian Standards Association, Ontario, Canada, 2004.
- [28] Mensah K. Reliability Assessment of structural concrete with special reference to stirrup design", PhD Thesis, University of Stellenbosch, South Africa, 2015.
- [30] Viljoen C, Retief JV, Sykora M. Assessment of alternative shear resistance models for reinforced concrete sections. Conference: fib Symposium, Cape Town, 2016.
- [31] Cladera A, Mari A. Shear strength in the new Eurocode 2. A step forward. *Journal of Structural Concrete*, 2007; 8(2): 57-66. <https://doi.org/10.1680/stco.2007.8.2.57>
- [32] Todisco L, Reineck KH, Bayrak O. European design rules for point loads near supports evaluated with data from shear tests on non-slender beams with vertical stirrups", *Journal of Structural Concrete*, 2016; 17(2): 135-144. <https://doi.org/10.1002/suco.201500089>
- [33] Mari A, Bairán J, Cladera A, Oller E, Ribas C. Shear-flexural strength mechanical model for the design and assessment of reinforced concrete beams. *Journal of Structure and Infrastructure Engineering*, 2015; 11(11): 1399-1419. <https://doi.org/10.1080/15732479.2014.964735>
- [34] De-Domenico D, Ricciardi G. Shear Strength of RC beams with Stirrups using an Improved Eurocode 2 Truss Model with Two Variable-Inclination Compression Struts. *Journal of Engineering Structures*, 2019; 198: 109359.
- [35] Reineck KH, Bentz E, Fitik B, Kuchma DA, Bayrak O. ACI-DAFstb databases for shear tests on slender reinforced concrete beams with stirrups. *ACI Structural Journal*, 2014; 111(5): 1147. <https://doi.org/10.14359/51686819>
- [36] Jensen B, Lapko A. On shear reinforcement design and structural concrete beams on the basis of the theory of plasticity. *Journal of Civil Engineering and Management*, 2009; 15(4): 395-403. <https://doi.org/10.3846/1392-3730.2009.15.395-403>
- [37] Mosley B, Bungey J, Hulse R. Reinforced Concrete Design to Eurocode 2. 6th Ed. Palgrave Macmillan, New York, USA, 2007.
- [38] Holicky M. Reliability analysis for structural design. SUN MeDIA, South Africa, 2009.
- [39] Collins MP. Evaluation of shear design procedures for concrete structures. A report prepared for CSA technical committee on reinforced concrete design, Canada, 2001.